



REVISION	
REV.	DESCRIPTION
G	PER EN #99-280 / SMM
H	PER EN #91-485 / KPT / RLA
J	REV. PER EDN #03-386 / NSW

ENGR.	APVD.	DATE
BKH		9/15/89
BBP		10/9/91
KAS	JUP	2/3/04

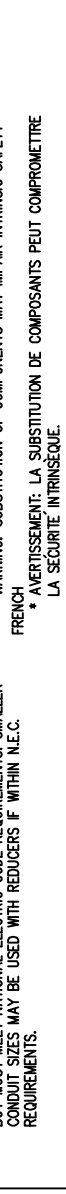
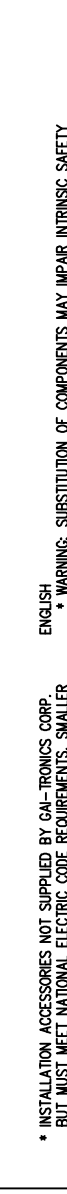
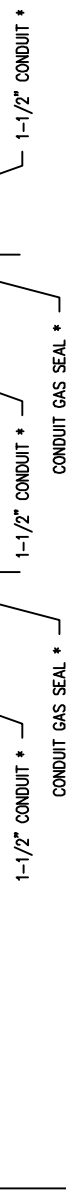
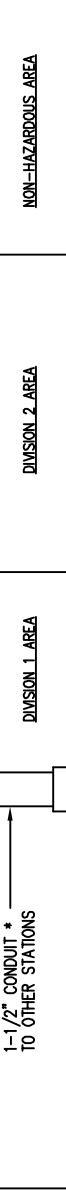
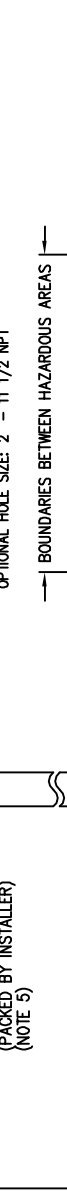
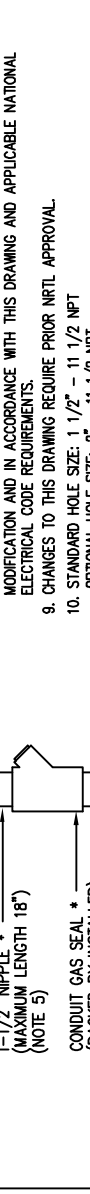
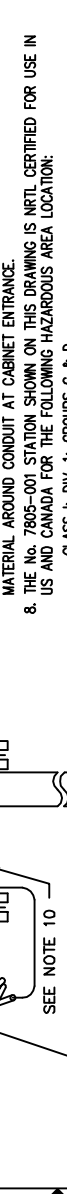
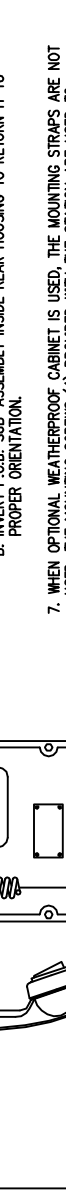
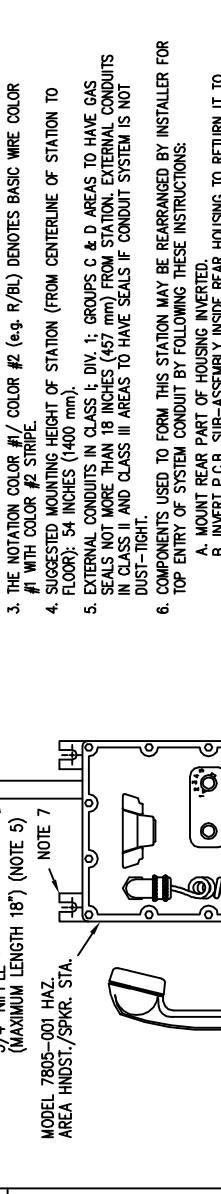
THIS DOCUMENT AND ITS CONTENTS ARE THE PROPERTY OF GAI-TRONICS CORPORATION (GTC), AND SHALL NOT BE REPRODUCED, COPIED, EITHER WHOLLY OR IN PART, WITHOUT THE EXPRESS WRITTEN CONSENT OF GTC. DISCLOSE, DIRECTLY OR INDIRECTLY, IN WHOLE OR IN PART, THE DOCUMENT/CONTENTS TO ANY PERSON OR ENTITY, AND SHALL NOT USE, IN WHOLE OR IN PART, THE DOCUMENT/CONTENTS, EXCEPT STRICTLY AS AUTHORIZED BY GTC.

- NOTES:
- COLOR CODE OF SYSTEM CABLE BASED ON GAI-TRONICS CORP. Mo. 60029-101 16-CONDUCTOR CABLE. WHERE STATIONS CAN BE SAFELY GROUNDED LOCALLY, No. 60024-201 14-CONDUCTOR CABLE (LACKING GREEN AND ORANGE CONDUCTORS) MAY BE USED.
  - COLOR CODE OF SPEAKER CABLE BASED ON GAI-TRONICS CORP. No. 60021-301 2-CONDUCTOR CABLE (TWISTED PAIR #18 AWG). CONNECTION SHOWN FOR 16 OHM SPEAKER. MOVE W/BK WIRE FROM TERMINAL #19 TO TERMINAL #18 FOR 8 OHM SPEAKER.
  - THE NOTATION COLOR #1/ COLOR #2 (e.g. R/BL) DENOTES BASIC WIRE COLOR #1 WITH COLOR #2 STRIPE.
  - SUGGESTED MOUNTING HEIGHT OF STATION (FROM CENTERLINE OF STATION TO FLOOR): 54 INCHES (1400 mm).
  - EXTERNAL CONDUITS IN CLASS I; DIV. 1; GROUPS C & D AREAS TO HAVE GAS SEALS NOT MORE THAN 18 INCHES (457 mm) FROM STATION. EXTERNAL CONDUITS IN CLASS II AND CLASS III AREAS TO HAVE SEALS IF CONDUIT SYSTEM IS NOT DUST-TIGHT.
  - COMPONENTS USED TO FORM THIS STATION MAY BE REARRANGED BY INSTALLER FOR TOP ENTRY OF SYSTEM CONDUIT BY FOLLOWING THESE INSTRUCTIONS:
    - MOUNT REAR PART OF HOUSING INVERTED.
    - INVERT P.C.B. SUB-ASSEMBLY INSIDE REAR HOUSING TO RETURN IT TO PROPER ORIENTATION.
  - WHEN OPTIONAL WEATHERPROOF CABINET IS USED, THE MOUNTING STRAPS ARE NOT USED. THE MOUNTING SCREWS (4) PROVIDED WITH THE STATION ARE USED TO MOUNT THE STATION INSIDE THE WEATHERPROOF CABINET. CONDUIT HOLES MUST BE DRILLED IN THE WEATHERPROOF CABINET USING THE TEMPLATE PROVIDED. IF CONDUIT ENTERS TOP OF WEATHERPROOF CABINET, USE WEATHERPROOF SEALING MATERIAL AROUND CONDUIT AT CABINET ENTRANCE.
  - THE No. 7805-001 STATION SHOWN ON THIS DRAWING IS NRTL CERTIFIED FOR USE IN US AND CANADA FOR THE FOLLOWING HAZARDOUS AREA LOCATION:
    - CLASS I; DIV. 1; GROUPS C & D
    - CLASS II; DIV. 1; GROUPS E, F & G
    - CLASS III; DIV. 1

APPROVAL IS BASED ON INSTALLATION WITHOUT UNAUTHORIZED EQUIPMENT MODIFICATION AND IN ACCORDANCE WITH THIS DRAWING AND APPLICABLE NATIONAL ELECTRICAL CODE REQUIREMENTS.

9. CHANGES TO THIS DRAWING REQUIRE PRIOR NRTL APPROVAL.

10. STANDARD HOLE SIZE: 1 1/2" - 11 1/2" NPT  
OPTIONAL HOLE SIZE: 2" - 11 1/2" NPT



1  
2  
3  
4

PUB. 42004-184A  
PAGE 2 OF 2  
INSTALLATION DRAWING

JOB DWG. No.		CONTRACT No.	
UNLESS OTHERWISE SPECIFIED, DIMENSIONS ARE IN INCHES		GAI-TRONICS CORPORATION READING, PA 19607 USA	
FRACTIONS DECIMALS ANGLES		No. 7805-001	
± 1/64 .XX ± .02 ± 1'		DIV. I HAZ. STA. 120 VAC, 5PL	
MATERIAL		INSTALLATION DRAWING	
FINISH		SIZE FSCM No. DWG No. 70629	
DO NOT SCALE DWG.		REV. J	
APVD. RER 11/4/82		SCALE	
SHEET 1 OF 1			

\* INSTALLATION ACCESSORIES NOT SUPPLIED BY GAI-TRONICS CORP. BUT MUST MEET NATIONAL ELECTRIC CODE REQUIREMENTS. SMALLER CONDUIT SIZES MAY BE USED WITH REDUCERS IF WITHIN N.E.C. REQUIREMENTS.

\* WARNING: SUBSTITUTION OF COMPONENTS MAY IMPAIR INTRINSIC SAFETY

\* AVERTISSEMENT: LA SUBSTITUTION DE COMPOSANTS PEUT COMPROMETTRE LA SECURITE INTRINSEQUE.