



GAI-TRONICS® CORPORATION
A HUBBELL COMPANY

EZ Page Front Panel Controls Replacement Kit

Model 12504-009

Confidentiality Notice

This manual is provided solely as an operational, installation, and maintenance guide and contains sensitive business and technical information that is confidential and proprietary to GAI-Tronics. GAI-Tronics retains all intellectual property and other rights in or to the information contained herein, and such information may only be used in connection with the operation of your GAI-Tronics product or system. This manual may not be disclosed in any form, in whole or in part, directly or indirectly, to any third party.

General Information

The Model 12504-009 Front Panel Controls Replacement Kit is used with the following EZ Page Intercom models: GC-AC1, GC-DC1, and GC-AC2. This kit includes the following components:

Qty Description

1	Knob
1	Front cover sealing nut for Listen/Talk switch
1	Front cover sealing nut for speaker volume/on-off switch
1	Wired Listen/Talk switch and speaker volume/on-off switch assembly
1	Hex nut
1	Anti-rotation ring

Required Tools

- #2 Phillips screwdriver
- 5/8-inch wrench
- 1/2-inch wrench
- .078-inch (5/64 inch) hex allen wrench

Installation



Disconnect power from the unit before opening or servicing the unit.

Removing the Old Front Panel Controls

1. Disconnect power to the unit.
2. Using the hex allen wrench, loosen the two screws that secure the knob and remove.
3. Using the #2 screwdriver, remove the six front panel screws that secure the front cover to the housing.
4. Slowly pull the front cover assembly from the rear housing—do not stress the attached wires.
5. Disconnect the connector (P3) from the internal printed circuit board assembly (PCBA).
Note the orientation of the potentiometer/switch (R1/SW1) and the toggle switch (SW2) for installation of the new controls.
6. Using the 5/8-inch wrench, remove and discard the sealing nut holding the toggle switch to the front cover.
7. Using the 1/2-inch wrench, remove and discard the sealing nut holding the potentiometer/switch to the front cover.

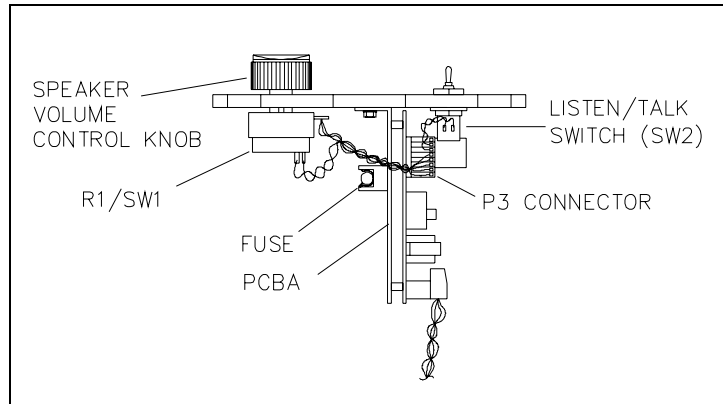


Figure 1. Location of Controls

NOTE: This will allow separation of the front cover from the PCBA's heatsink plate.

8. Discard the wired switch assembly.

Installing the New Front Panel Controls

1. Remove any hardware that might be pre-attached to the new speaker volume/on-off switch; it is not used in this application.
2. Ensure that the new speaker volume/on-off switch is turned fully counterclockwise to the off position.

3. Insert the new speaker volume/on-off switch (R1/SW1) through the heatsink plate and through the front cover. Ensure that the associated anti-rotation pin is properly inserted into the amplifier heatsink plate's locking notch and the attached wires are positioned towards the fuse holder. Refer to Figure 1 and Figure 2.

4. Place the new smaller sealing nut over the speaker volume/on-off switch's shaft and lightly tighten against the front cover.

5. Ensure that the new Listen/Talk switch's supplied hex nut is screwed tightly against the switch body.

6. Install the supplied anti-rotation ring (locking tab towards heatsink plate) onto the Listen/Talk switch's mounting threads.

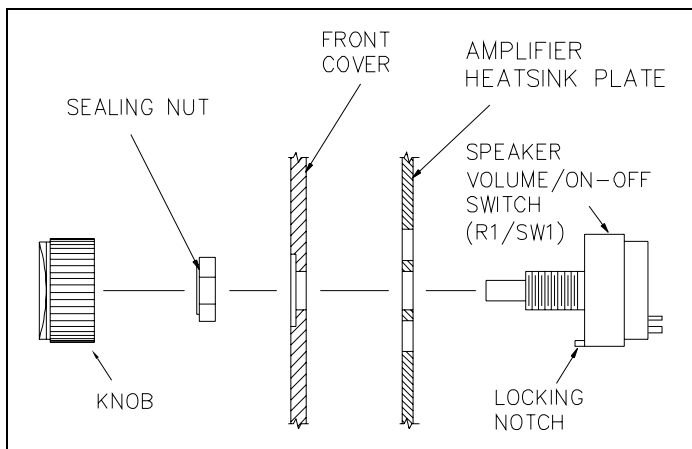


Figure 2. Speaker Volume/On-off Switch Assembly

7. Insert the new Listen/Talk switch through the heatsink plate and front cover.

(Position the bat handle towards the LISTEN position as indicated on the front panel label.)

8. Place the new sealing nut over the bat handle and tighten against the front cover.

9. Tighten the speaker volume on/off switch's sealing nut against the front cover.

10. Reconnect the P3 connector to the PCBA.

11. Carefully reinsert the front panel assembly into the unit's housing. Use caution to not pinch any wires between the front cover and the housing.

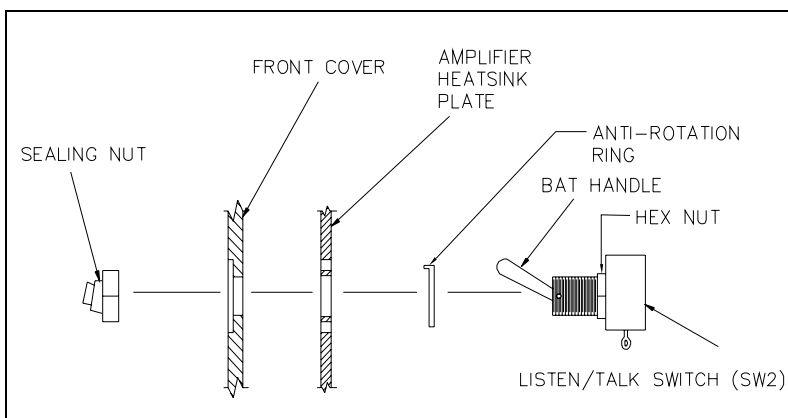


Figure 3. Listen/Talk Switch Assembly Diagram

12. Reinstall the six front cover screws and tighten securely.

13. With the new speaker volume on-off switch fully counterclockwise, attach the new knob. Position the knob's *white dot* adjacent to the *off dot* on the front panel label and retighten both set screws using the hex allen wrench.

14. Reapply power and check for proper operation.

Warranty

Equipment. GAI-Tronics warrants for a period of one (1) year from the date of shipment, that any GAI-Tronics equipment supplied hereunder shall be free of defects in material and workmanship, shall comply with the then-current product specifications and product literature, and if applicable, shall be fit for the purpose specified in the agreed-upon quotation or proposal document. If (a) Seller's goods prove to be defective in workmanship and/or material under normal and proper usage, or unfit for the purpose specified and agreed upon, and (b) Buyer's claim is made within the warranty period set forth above, Buyer may return such goods to GAI-Tronics' nearest depot repair facility, freight prepaid, at which time they will be repaired or replaced, at Seller's option, without charge to Buyer. Repair or replacement shall be Buyer's sole and exclusive remedy. The warranty period on any repaired or replacement equipment shall be the greater of the ninety (90) day repair warranty or one (1) year from the date the original equipment was shipped. In no event shall GAI-Tronics warranty obligations with respect to equipment exceed 100% of the total cost of the equipment supplied hereunder. Buyer may also be entitled to the manufacturer's warranty on any third-party goods supplied by GAI-Tronics hereunder. The applicability of any such third-party warranty will be determined by GAI-Tronics.

Services. Any services GAI-Tronics provides hereunder, whether directly or through subcontractors, shall be performed in accordance with the standard of care with which such services are normally provided in the industry. If the services fail to meet the applicable industry standard, GAI-Tronics will re-perform such services at no cost to buyer to correct said deficiency to Company's satisfaction provided any and all issues are identified prior to the demobilization of the Contractor's personnel from the work site. Re-performance of services shall be Buyer's sole and exclusive remedy, and in no event shall GAI-Tronics warranty obligations with respect to services exceed 100% of the total cost of the services provided hereunder.

Warranty Periods. Every claim by Buyer alleging a defect in the goods and/or services provided hereunder shall be deemed waived unless such claim is made in writing within the applicable warranty periods as set forth above. Provided, however, that if the defect complained of is latent and not discoverable within the above warranty periods, every claim arising on account of such latent defect shall be deemed waived unless it is made in writing within a reasonable time after such latent defect is or should have been discovered by Buyer.

Limitations / Exclusions. The warranties herein shall not apply to, and GAI-Tronics shall not be responsible for, any damage to the goods or failure of the services supplied hereunder, to the extent caused by Buyer's neglect, failure to follow operational and maintenance procedures provided with the equipment, or the use of technicians not specifically authorized by GAI-Tronics to maintain or service the equipment. **THE WARRANTIES AND REMEDIES CONTAINED HEREIN ARE IN LIEU OF AND EXCLUDE ALL OTHER WARRANTIES AND REMEDIES, WHETHER EXPRESS OR IMPLIED BY OPERATION OF LAW OR OTHERWISE, INCLUDING ANY WARRANTIES OF MERCHANTABILITY OR FITNESS FOR A PARTICULAR PURPOSE.**

Return Policy

If the equipment requires service, contact your Regional Service Center for a return authorization number (RA#). Equipment should be shipped prepaid to GAI-Tronics with a return authorization number and a purchase order number. If the equipment is under warranty, repairs or a replacement will be made in accordance with the warranty policy set forth above. Please include a written explanation of all defects to assist our technicians in their troubleshooting efforts.

Call 800-492-1212 (inside the USA) or 610-777-1374 (outside the USA) for help identifying the Regional Service Center closest to you.